



Quick Start Guide

C-Pen Core Mac Beta version 1.4b4 and 1.6b2

OS Compatibility:

Mac OS X 10.6 or later on Intel supported.

Important! Mac OS X 10.5 (Intel, PPC) does NOT work with this version.

C-Pen model compatibility:

C-Pen 20, Ectaco/C-Pen, C-Pen 3.0, C-Pen 3.5, TS1

Features:

Text-scanning (Text to cursor, Text to speech) via USB

Text-scanning (Text to cursor, Text to speech) via Bluetooth with C-Pen 3.5

Release notes:

UI/Settings changed to comply with 10.9

Supporting C-Pen TS1

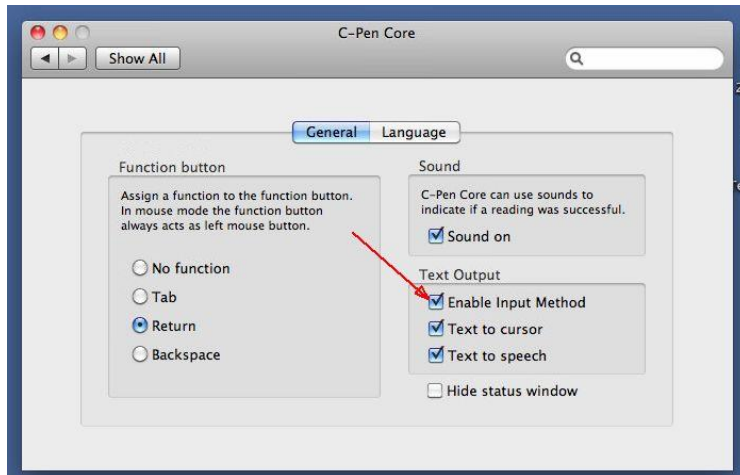
1. Installing the C-Pen Mac Beta Software

- Close all open applications on the computer.
- Download and install the C-Pen Mac Beta software
 - MAC OSX ->10.8: [CPenCore 1.4b4](#)
 - MAC OSX 10.9-10.11: [CPenCore 1.6b2](#)
- Follow the instructions on the screen to complete the installation.

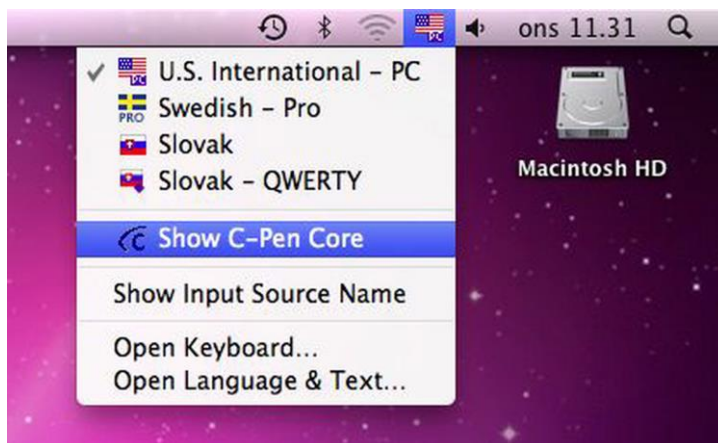
After the installation has finished successfully, you will have a mounted disk named “C-Pen Core” on your desktop. This “installer disk” is no longer needed after installation. Drag it to the Trash to eject it. It can also be ejected from Finder, by pressing the eject symbol next to “C-Pen Core”.

2. Activate C-Pen Core input method

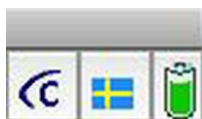
- Open **System Preferences** → **C-Pen Core Settings**
- Select the **Enable Input Method** checkbox (see image)



- Close the **C-Pen Core** window.
- Select **Show C-Pen Core** from the input menu at the top of the screen. (see image)



- A floating window will appear on your desktop.



- The C-Pen logotype will become dark blue when the pen is connected.
- Click the logotype to access C-Pen settings and more.
- Click the flag so select the language of the document you intend to scan.
- The battery symbol will be displayed only if the C-Pen 3.5 model is connected
- To remove the floating window, select "Hide C-Pen Core" from the input menu at the top of the screen.

3. Connect the C-Pen

3.1. Via USB

Connect C-Pen to USB and start scanning to the cursor in any application.

3.2. Via Bluetooth

If you have the C-Pen 3.5 model you may connect it using Bluetooth.

How to connect (pair) C-Pen to Mac using Bluetooth

1. Turn on Bluetooth on your Mac.
2. Click on **Setup Bluetooth Device** in the Bluetooth dropdown menu.
3. Make sure that the C-Pen is turned off. To turn it off, remove the cable and press the function button for 4 seconds.
4. Re-start the C-Pen 3.5 in discoverable mode:
 - Press and hold the function button until the pens blue light starts flashing. (6 seconds.)
5. The C-Pen should soon be visible in the **Bluetooth Setup Assistant** window.
6. Choose C-Pen and click **Continue**.
7. Click the **Passcode options** button.
8. Click **Use a specific passcode**.
9. Enter 1234.
10. Press **Ok** and then **Continue**.
11. Pairing should now be completed. C-Pen Bluetooth status will change between connected/disconnected until the C-Pen application is launched.
12. To launch the C-Pen application, select **Show C-Pen Core** in the input menu at the top of the screen.

4. How Do I Use the C-Pen?

4.1 Text to Cursor

The C-Pen Mac Beta software does not display the text you scan. The scanned text will be inserted at the cursor. This means that you can scan text into any standard application. This is an example on how to scan text into the TextEdit application:

1. First check that the C-Pen is connected. The C-Pen logo (in the floating window) is dark blue when the pen is successfully connected.
2. Start the TextEdit application and place the cursor in the Text Edit document. Do NOT click anywhere else as this will move the cursor and make your application window passive.

3. Place the tip of the C-Pen a few millimetres before the first character of the text. Press C-Pen gently to the paper and start moving it along the text line. Try to keep a steady line! Lift C-Pen from the paper when you have scanned the last character.
4. The text you just scanned will instantly be inserted into TextEdit.

The text is fully editable, i.e. depending on your text-editor you can edit the text and change font type and font size to customize the text.

4.2 Text to Speech (TTS)

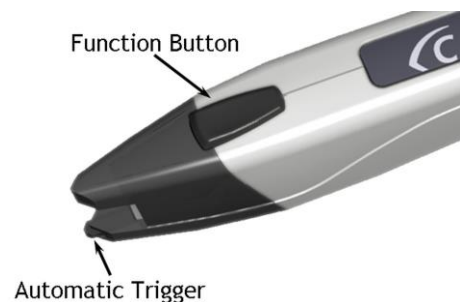
The MAC operating system already contains a Text to Speech engine. In the C-Pen settings, check the **Text to Speech** box to route each scan through this engine.

The text you scan will be spoken out loud by the selected voice directly after lifting the pen from the paper. Depending on your MAC operating system, the available voices may differ. Try your different MAC voices out by selecting them directly in the **C-Pen Core settings**.

4.3 Pen buttons

Note that there is a small automatic trigger button at the tip of the C-Pen. This button activates the scanning when the C-Pen is pressed against the paper. It is important that it is pressed in during the complete scan. The automatic trigger is shown in the picture to the left.

The function button shall NOT be pressed during the scan.



5. Switching the Pen On and Off

5.1. C-Pen 20, Ectaco/C-Pen, and C-Pen 3.0

These models are always turned on when the USB cable is connected to a computer which is turned on. These models will automatically turn off when you turn off the computer, or if you remove the USB cable.

5.2. C-Pen 3.5

This model has an internal rechargeable battery.

When the USB cable is connected: C-Pen 3.5 will always be ON.

When the USB cable is not connected:

Turn the pen ON by pressing the function button.

Turn the pen OFF by keeping the function button pressed for 3 seconds. (LED will turn off)

To enter "Discoverable mode", start the C-Pen 3.5 by pressing the function button for 6 seconds. The blue LED will blink once per second to indicate "Discoverable Mode".

6. Troubleshooting

6.1. I can't see the floating C-Pen window

- You may have to activate the input menu. Check paragraph 2 (above).

6.2. The scanned text does not appear at the cursor in the text editor.

- You may have to activate the input menu. Check paragraph 2 (above).
- You may have deselected the **Text to cursor** option in the settings. Go to **System Preferences** → **C-Pen Core settings** and make sure that **Text to cursor** is selected.
- You may have to reinstall the Mac Beta. Follow 6.3 below, and then install the latest version of C-Pen Core for MAC again. Reboot after installation.

6.3. How do I uninstall the Mac Beta?

1. Select **Hide C-Pen Core** in the input menu.
2. Run **Uninstall C-Pen Core.app** available in your Home folder.
3. Restart your MAC.

6.4. My C-Pen does not respond. What can I do?

If you have the C-Pen 3.5 and the C-Pen does not respond, perform a hardware reset. To do this, remove the cable and press the function button on the C-Pen 3-5 for more than 14 seconds. This will reset the pen. To start it again, press the function button.

6.5. My Bluetooth connection doesn't work.

This problem can depend on the Apple Bluetooth Stack. Therefore, perform the SMC reset on your Mac.

Information is available here:

<http://support.apple.com/kb/HT3964>

C-Pen – The easy way

Hardware, firmware and software by C Technologies AB. Copyright © 2005 to 2012 C Technologies AB. All rights reserved.

C Technologies, C-PEN and C DICTIONARY are trademarks or registered trademarks of C Technologies AB and/or Anoto Group AB.

Optical Character Recognition:

ABBYY® FineReader® Engine 8.0 © ABBYY 2005. ABBYY FineReader – the keenest eye in OCR. ABBYY, FINEREADER and ABBYY FineReader are registered trademarks of ABBYY Software Ltd. Windows® and USB® are trademarks, properties of their owners.